

Mw9 Tohoku, Japan Earthquake and Tsunami, 11 March 2011, 05:46 UTC

Mainshock location, magnitude and tsunami potential determinations in real-time at INGV

Anthony Lomax - *ALomax Scientific, Mouans-Sartoux, France.* www.alomax.net , anthony@alomax.net

Alberto Michelini - *Istituto Nazionale di Geofisica e Vulcanologia, Roma, Italy,* alberto.michelini@ingv.it

Selected realtime screenshots in the first 20 min after the earthquake origin from the [INGV Earthquake Monitor](#) are shown in the following slides.

This work was supported by the 2007-2009 Dipartimento della Protezione Civile S3 project at [INGV](#) and by INGV-CNT institutional funds. The facilities of [GFZ-GEOFON](#) and the [IRIS Data Management Center](#) were used for access to waveform (SeedLink server) and metadata used here. Plate boundaries from [Bird, P. \(2003\) An updated digital model of plate boundaries](#). Plots made with GMT (<http://gmt.soest.hawaii.edu>).

References:

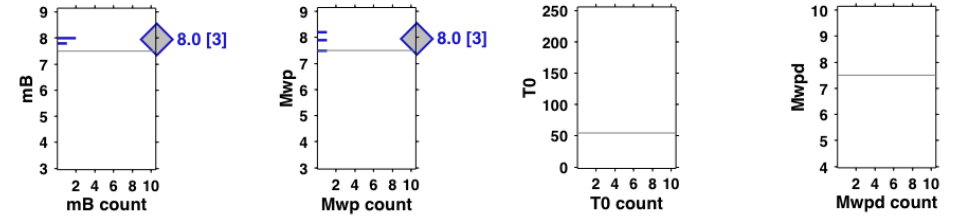
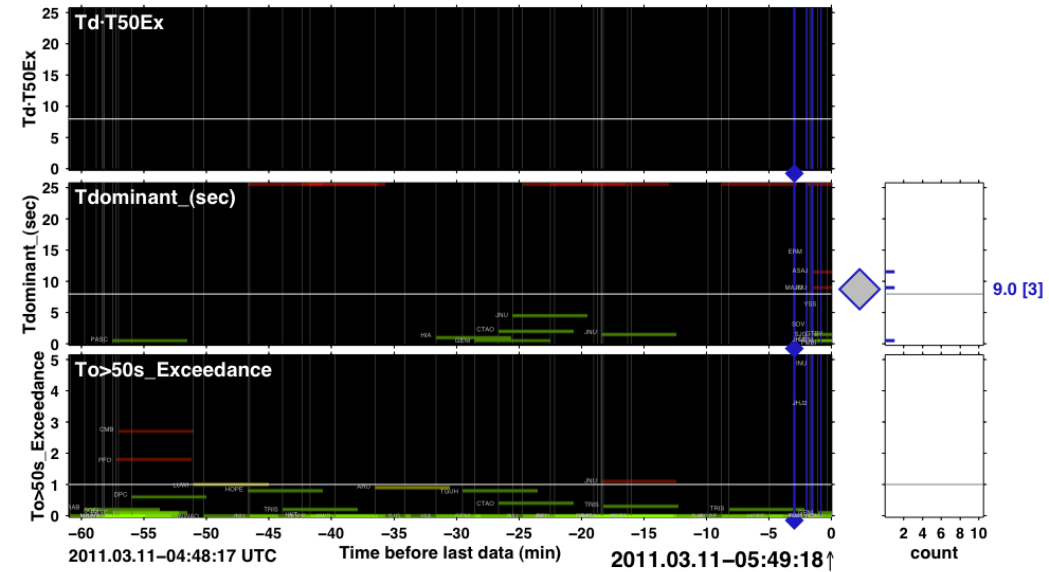
Lomax, A. and A. Michelini, 2011, **Tsunami early warning using earthquake rupture duration and P-wave dominant period: the importance of length and depth of faulting**, *Geophys. Journal Int.*, first published on-line Jan. 20, 2011, DOI: 10.1111/j.1365-246X.2010.04916.x. ([further information](#))

Lomax, A. and A. Michelini, 2009, **Tsunami early warning using earthquake rupture duration**, *Geophys. Res. Lett.*, **36**, L09306, doi:10.1029/2009GL037223. ([further information](#))

Lomax, A. and A. Michelini (2009), **Mwpd: A Duration-Amplitude Procedure for Rapid Determination of Earthquake Magnitude and Tsunamigenic Potential from P Waveforms**, *Geophys. J. Int.*, **176**, 200-214. ([further information](#))

Honshu, Japan 2011.03.11 - INGV Realtime Monitor

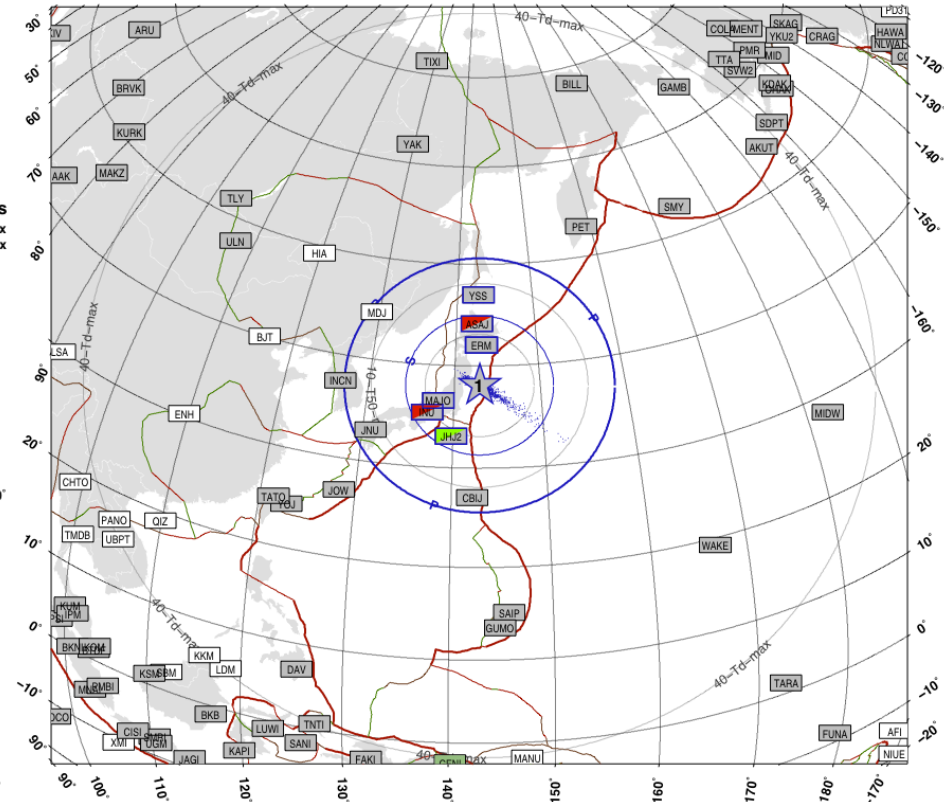
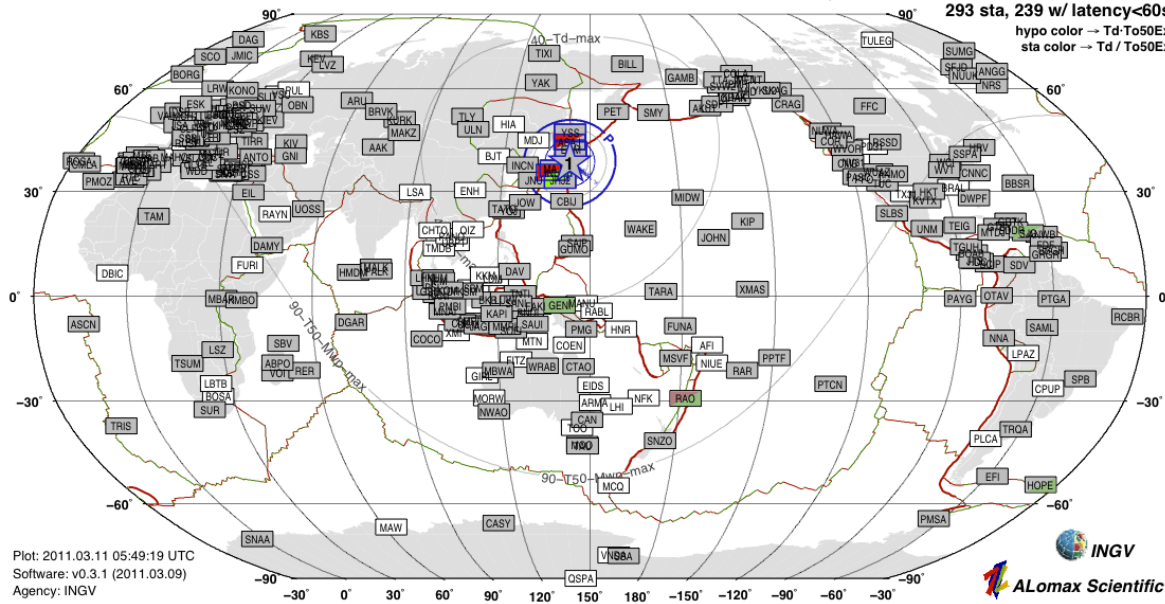
OT+3min: first located: mB=8.0 Mwp=8.0



Earthquake Location · Td-T50Ex Level · mB · Mwp · TO · Mwpd Monitor

Earthquake details (automatic solutions):

n	pha	Δ min	rot	origin-time-UTC	lat ^o	lon ^o	errH	depth	errZ	T50Ex [n]	Td [n]	TdT50 WL	mB [n]	Mwp [n]	TO [n]	Mwpd [n]						
1	6	3.9	0.5	2011.03.11-05:46:20	38.1	142.9	28	14	40	0.0	0	9.0	3	0.0	n/a	3	n/a	3	n/a	0	n/a	0

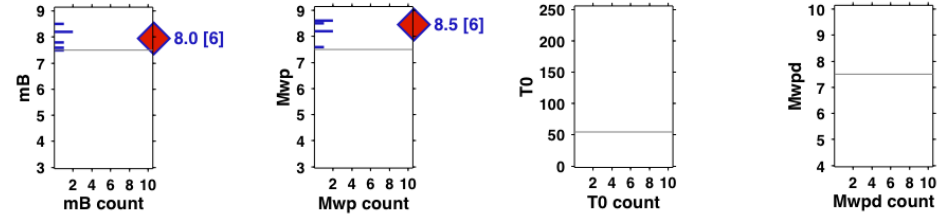
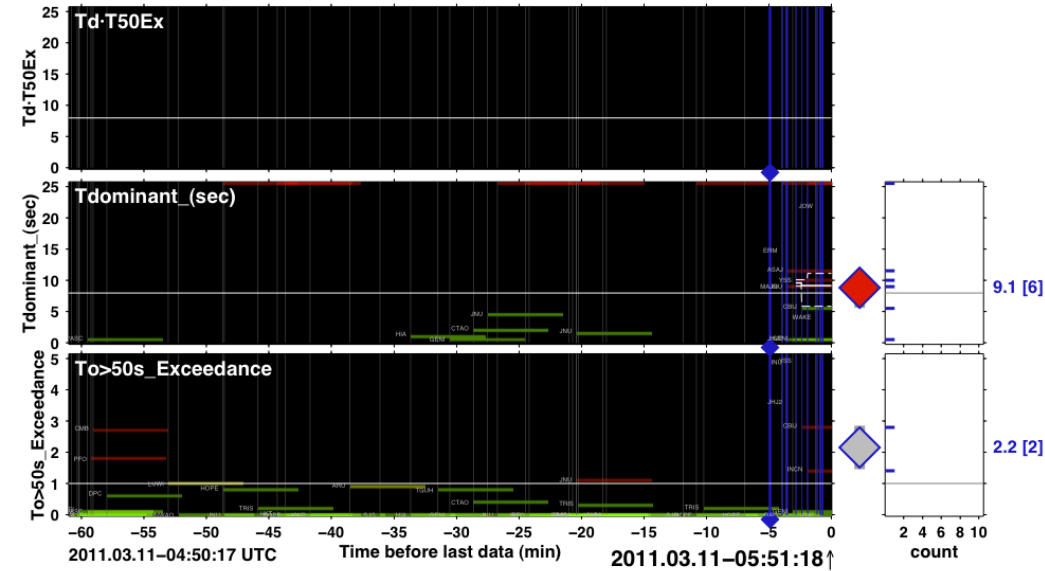


Plot: 2011.03.11 05:49:19 UTC
 Software: v0.3.1 (2011.03.09)
 Agency: INGV



Honshu, Japan 2011.03.11 - INGV Realtime Monitor

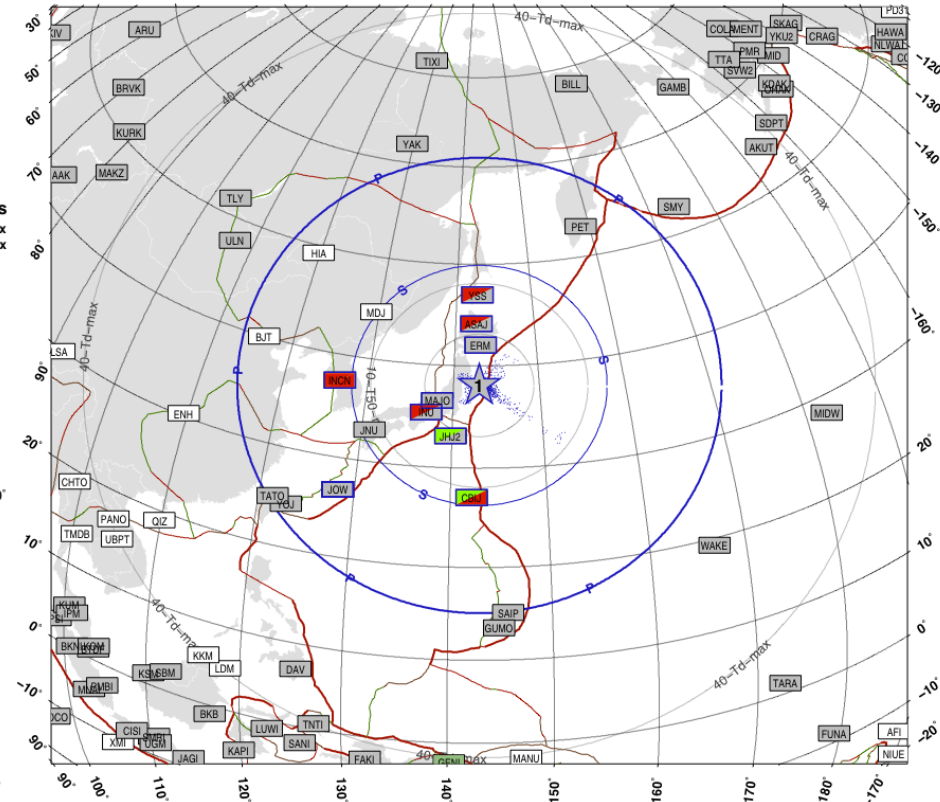
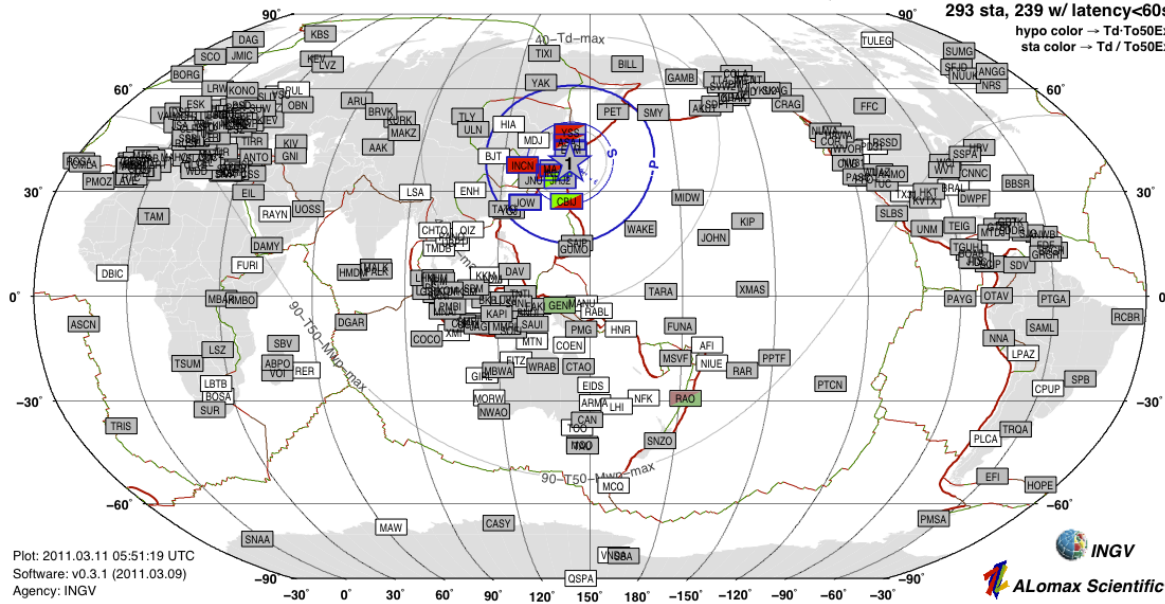
OT+5min: mB=8.0 Mwp=8.5



Earthquake Location · Td-T50Ex Level · mB · Mwp · T0 · Mwpd Monitor

Earthquake details (automatic solutions):

n pha Δmin° rot origin-time-UTC lat° lon° errH depth errZ T50Ex [n] Td [n] TdT50 WL mB [n] Mwp [n] T0 [n] Mwpd [n]
 1 9 3.9 0.7 2011.03.11-05:46:22 38.1 143.0 17 95 49 2.2 2 9.1 6 0.0 8.0 6 8.5 6 n/a 0 n/a 0

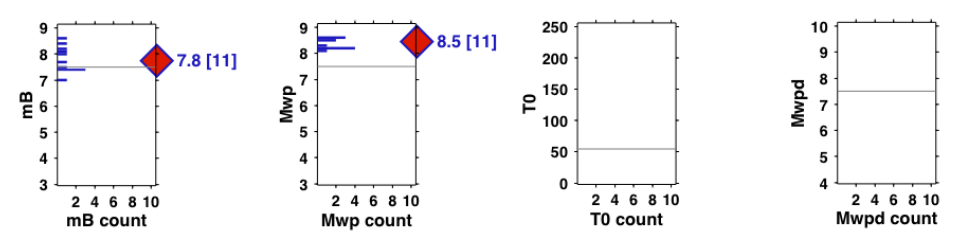
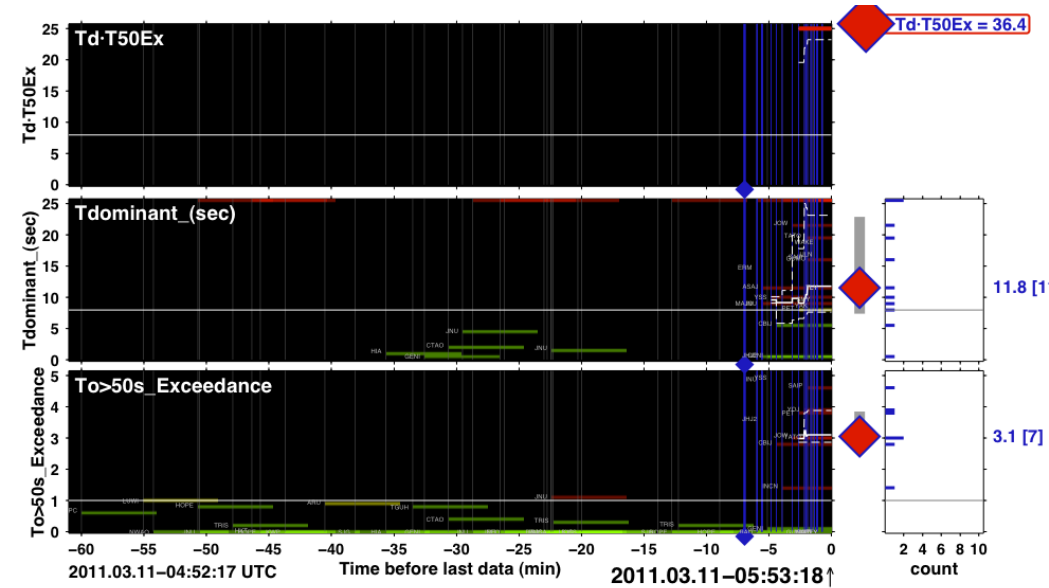


Plot: 2011.03.11 05:51:19 UTC
 Software: v0.3.1 (2011.03.09)
 Agency: INGV



Honshu, Japan 2011.03.11 - INGV Realtime Monitor

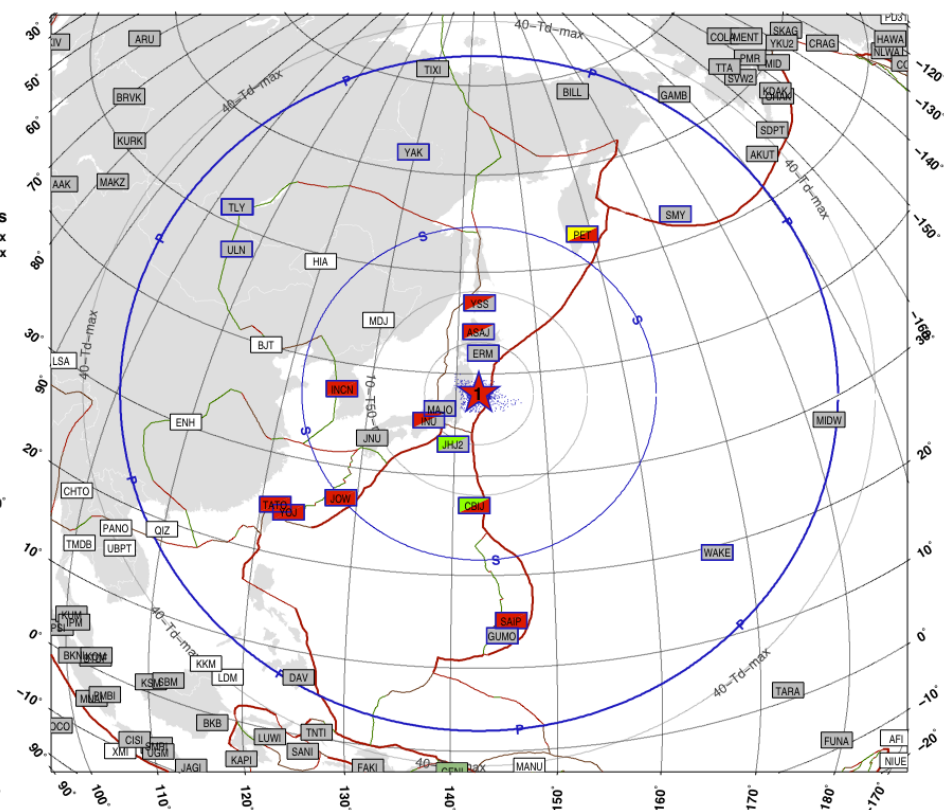
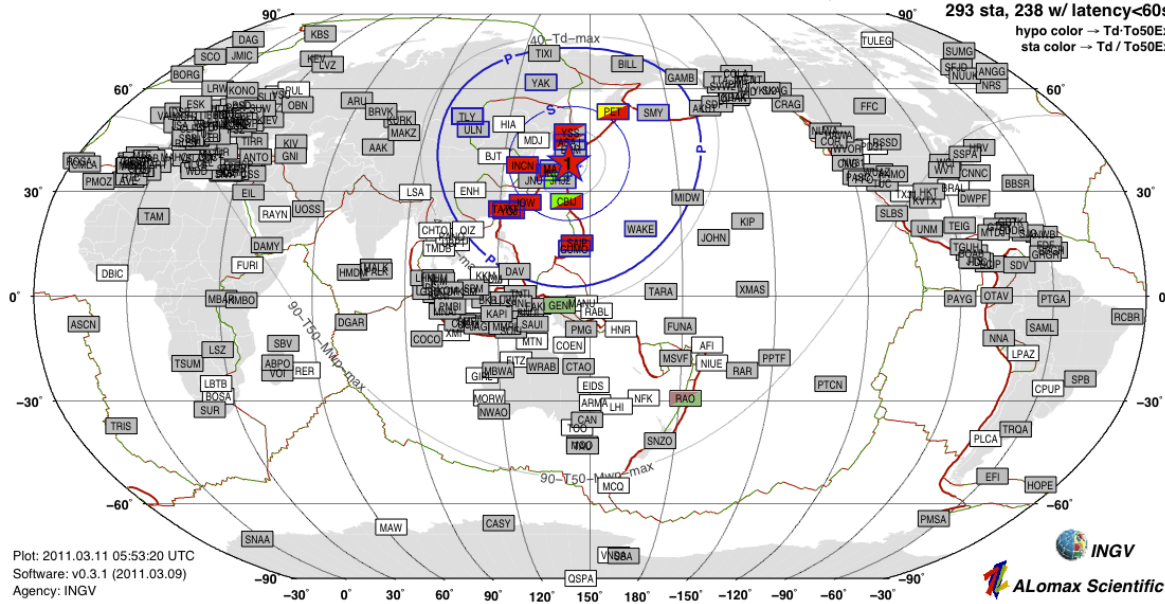
OT+8min: mB=7.8 Mwp=8.5 TsunamiWL=36RED



Earthquake Location · Td-T50Ex Level · mB · Mwp · T0 · Mwpd Monitor

Earthquake details (automatic solutions):

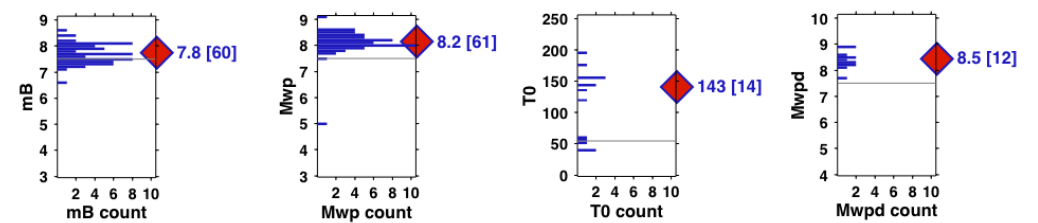
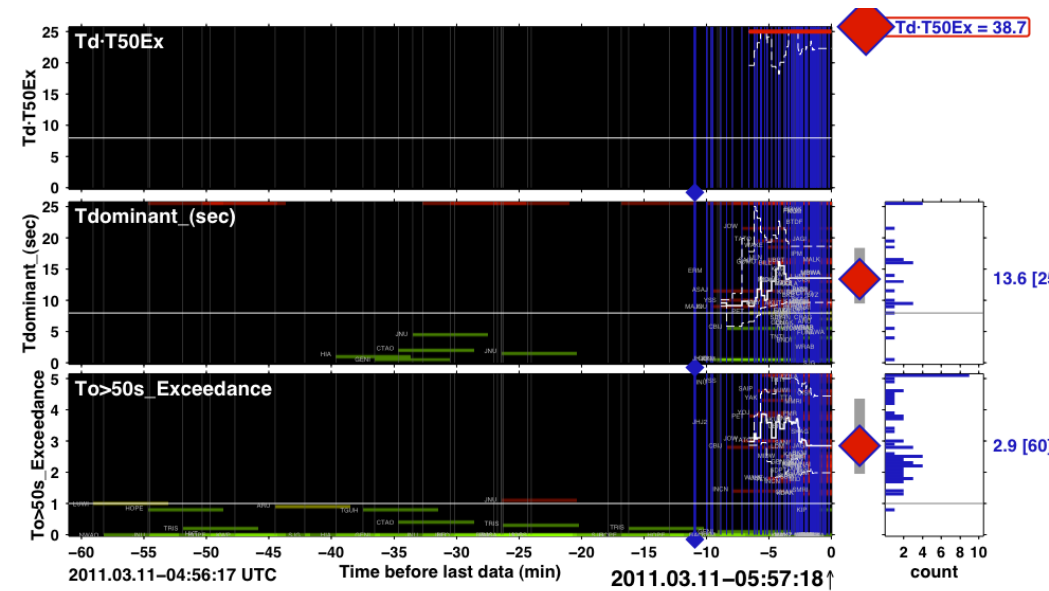
n	pha	Amin	rot	origin-time-UTC	lat°	lon°	errH	depth	errZ	T50Ex [n]	Td [n]	TdT50 WL	mB [n]	Mwp [n]	T0 [n]	Mwpd [n]				
1	19	3.9	2.1	2011.03.11-05:46:21	38.1	142.7	24	14	15	3.1	7	11.8	11	36.4	7.8	8.5	n/a	0	n/a	0



Plot: 2011.03.11 05:53:20 UTC
Software: v0.3.1 (2011.03.09)
Agency: INGV

Honshu, Japan 2011.03.11 - INGV Realtime Monitor

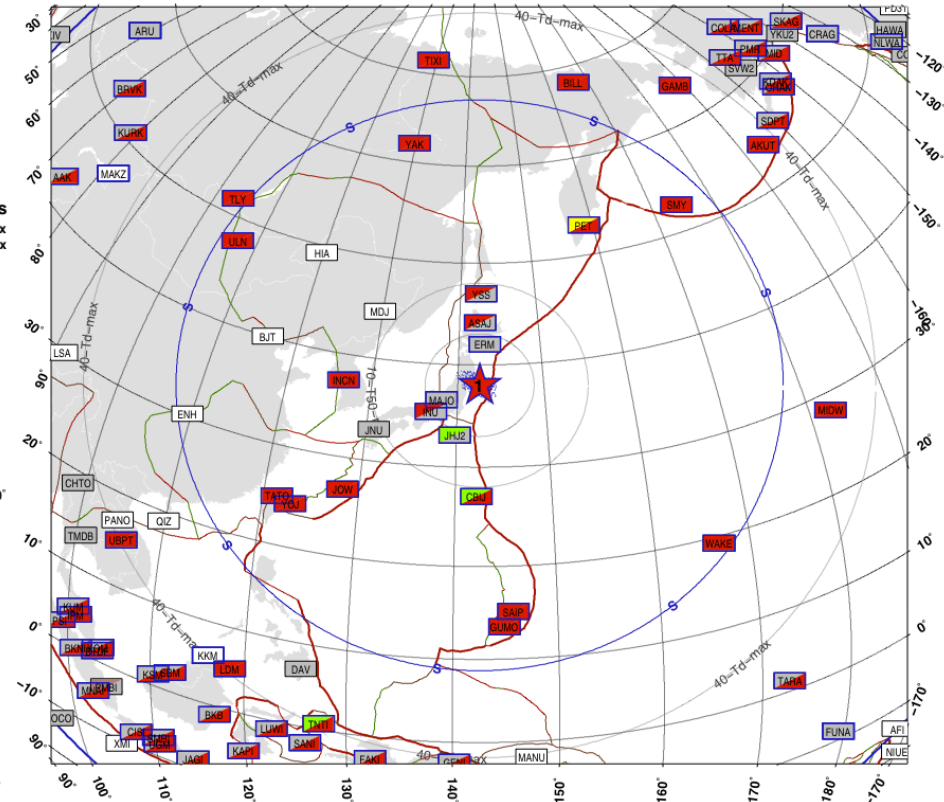
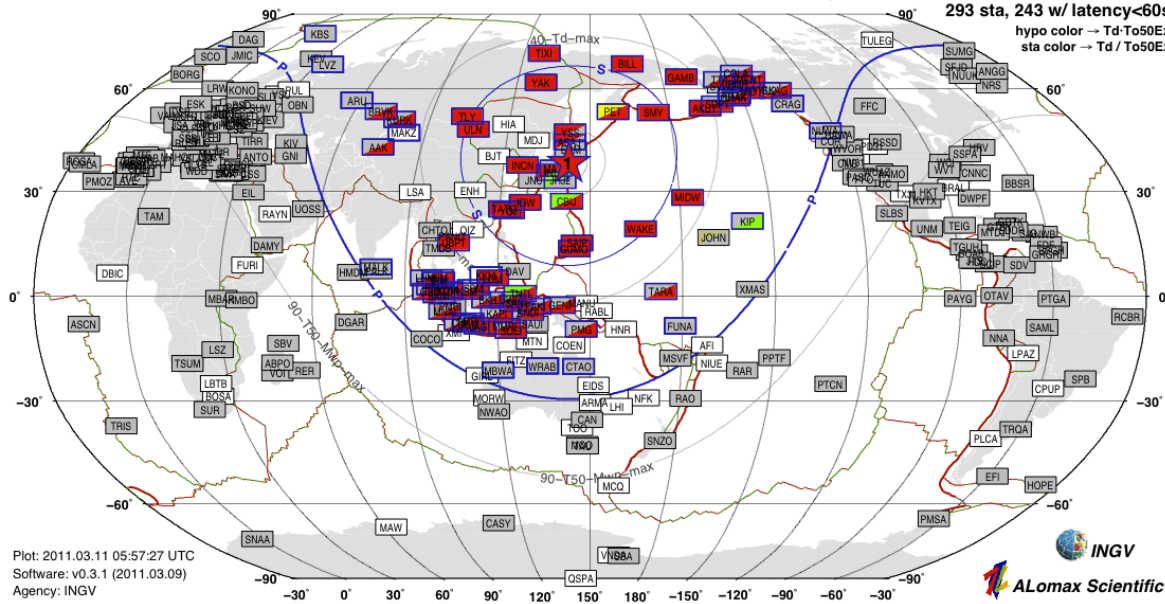
OT+12min: mB=7.8 Mwp=8.2 TsunamiWL=39RED Mwpd=8.5



Earthquake Location · Td-T50Ex Level · mB · Mwp · T0 · Mwpd Monitor

Earthquake details (automatic solutions):

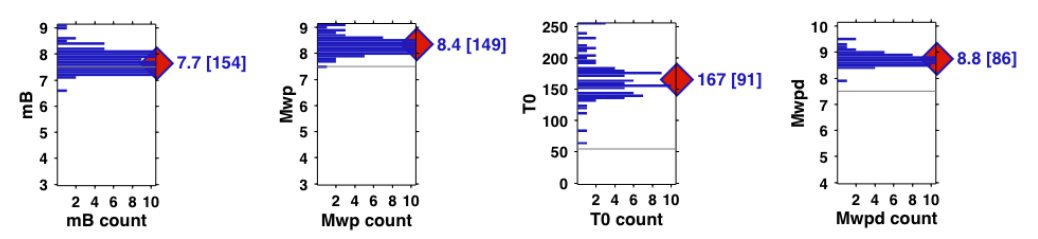
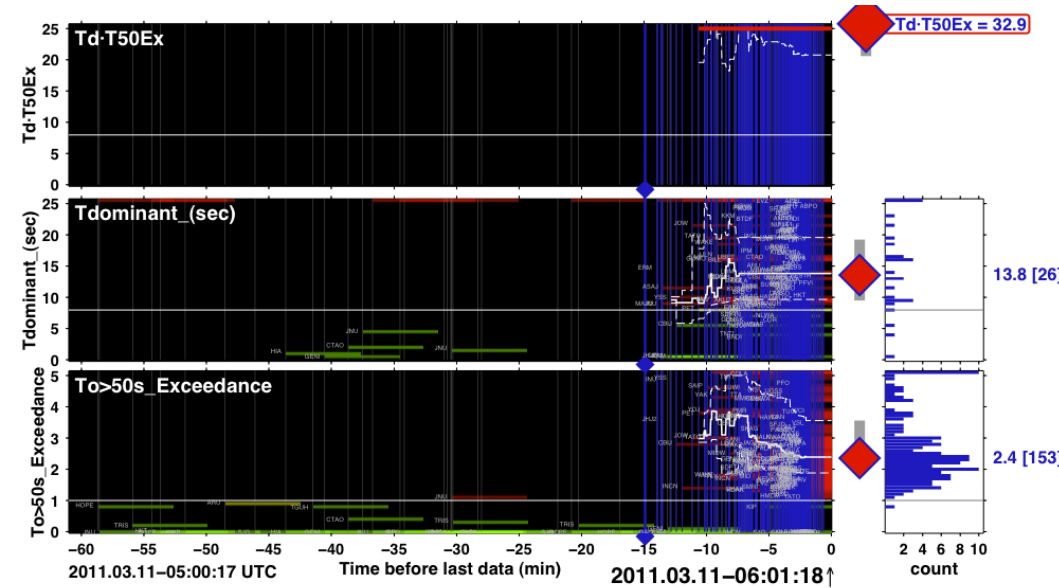
n	pha	Δmin°	rot	origin-time-UTC	lat°	lon°	errH	depth	errZ	T50Ex [n]	Td [n]	TdT50 WL	mB [n]	Mwp [n]	T0 [n]	Mwpd [n]						
1	77	3.8	2.1	2011.03.11-05:46:22	38.0	142.5	27	14	11	2.9	60	13.6	25	38.7	7.8	60	8.2	61	143	14	8.5	12



Plot: 2011.03.11 05:57:27 UTC
Software: v0.3.1 (2011.03.09)
Agency: INGV

Honshu, Japan 2011.03.11 - INGV Realtime Monitor

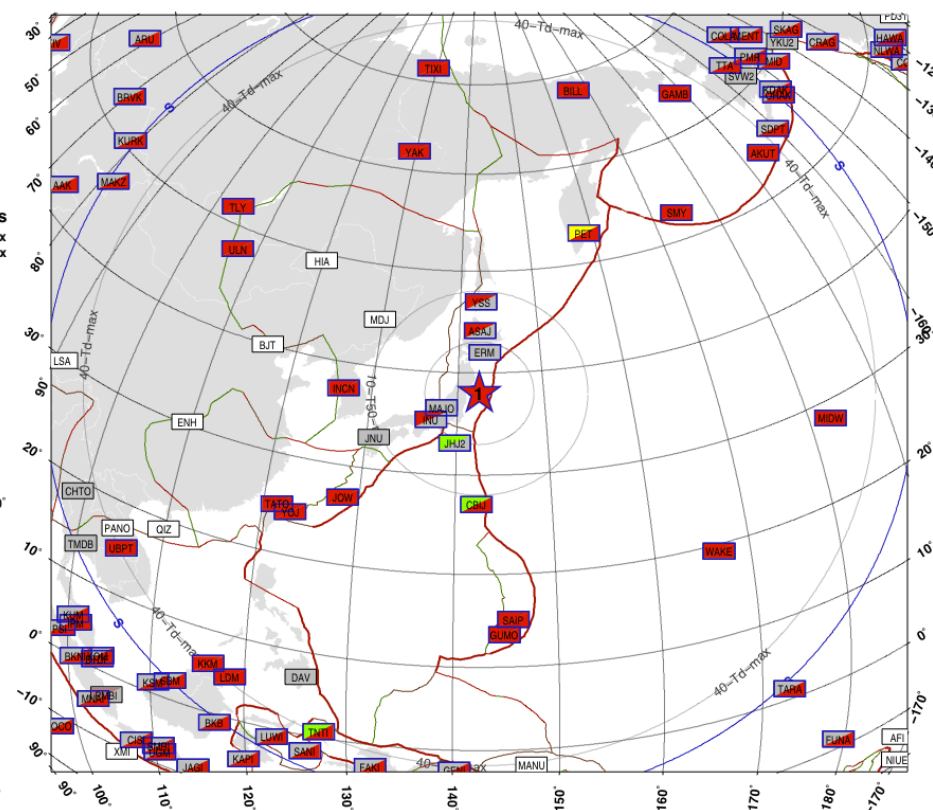
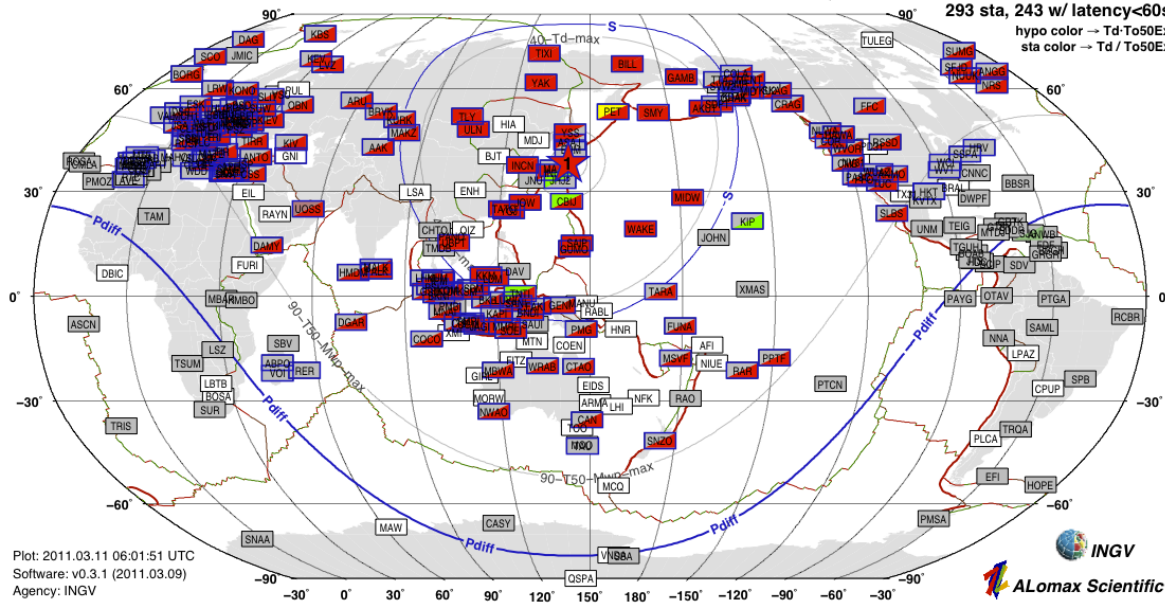
OT+15min: mB=7.7 Mwp=8.4 TsunamiWL=33RED Mwpd=8.8



Earthquake Location · Td-T50Ex Level · mB · Mwp · T0 · Mwpd Monitor

Earthquake details (automatic solutions):

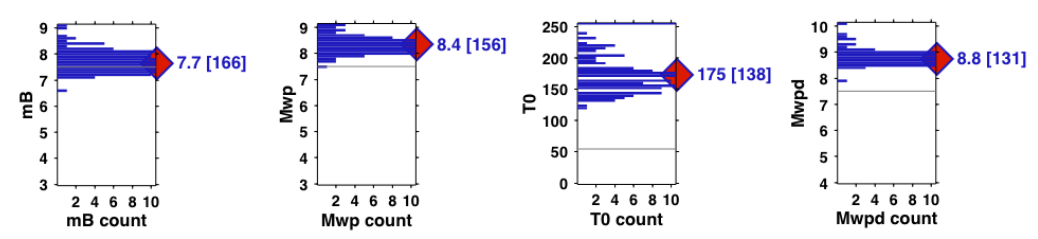
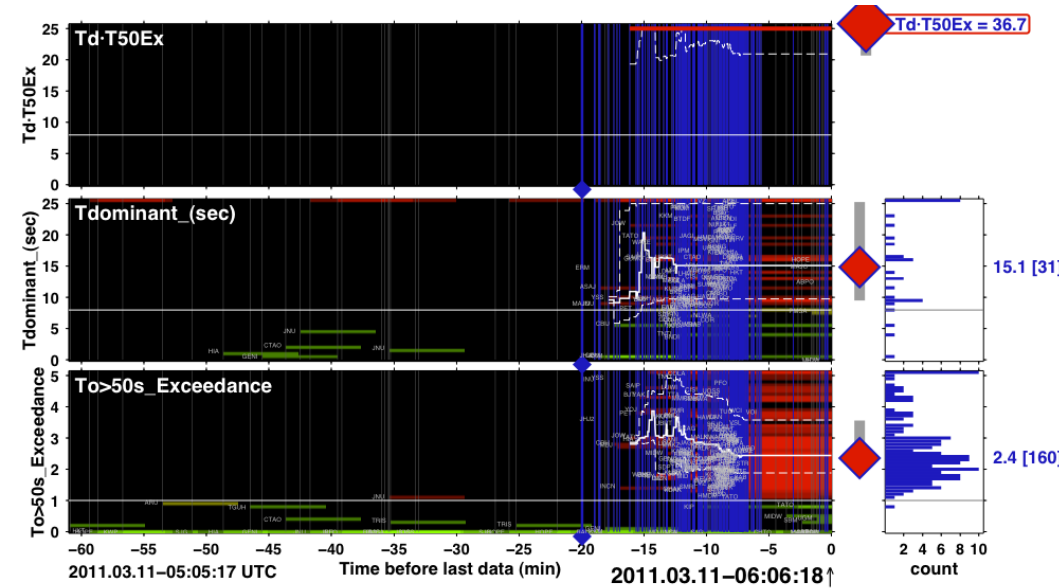
n	pha	Amin	rot	origin-time-UTC	lat°	lon°	errH	depth	errZ	T50Ex [n]	Td [n]	TdT50 WL	mB [n]	Mwp [n]	T0 [n]	Mwpd [n]			
1	165	3.7	1.9	2011.03.11-05:46:22	38.0	142.5	24	14	14	2.4 ₁₅₃	13.8	26	32.9	7.7 ₁₅₄	8.4 ₁₄₉	167	91	8.8	86



Plot: 2011.03.11 06:01:51 UTC
Software: v0.3.1 (2011.03.09)
Agency: INGV

Honshu, Japan 2011.03.11 - INGV Realtime Monitor

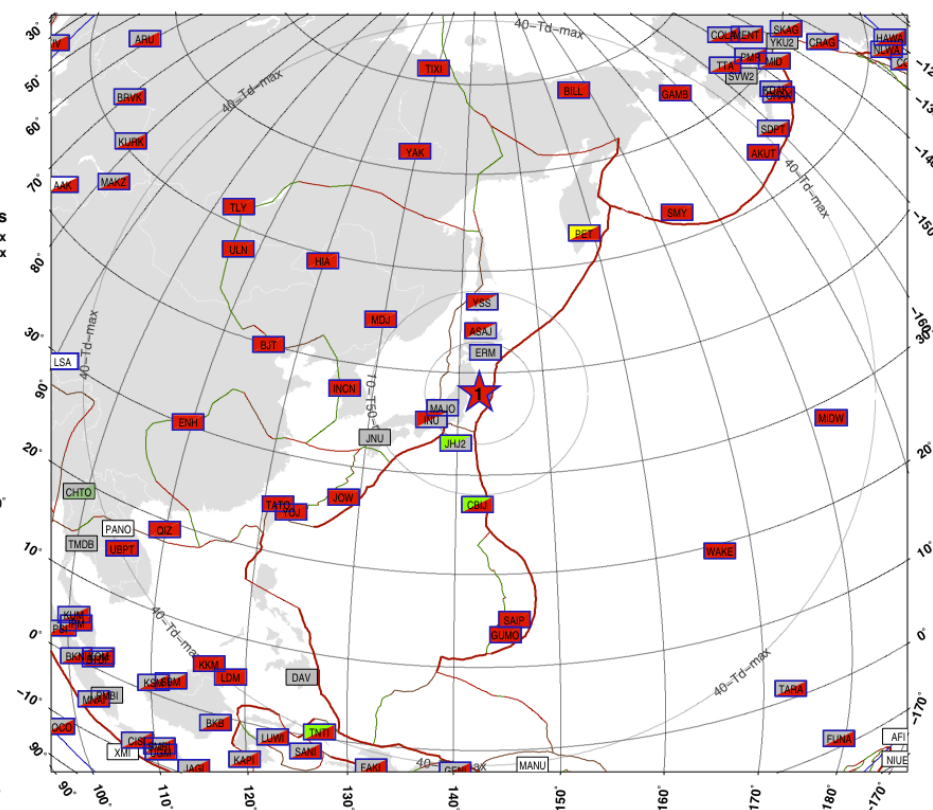
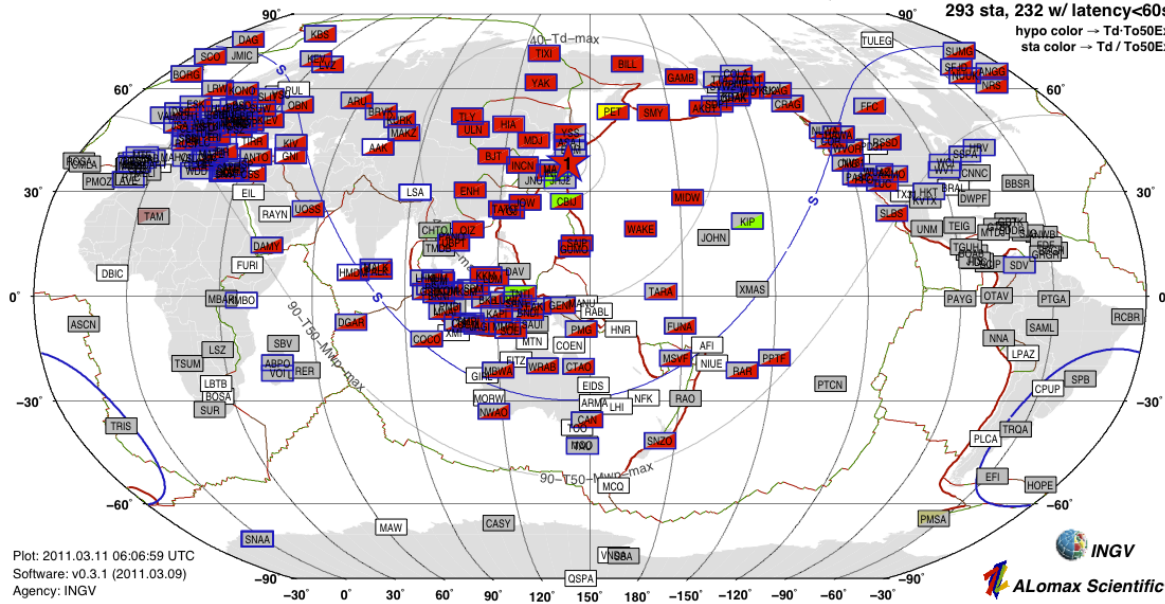
OT+20min: mB=7.7 Mwp=8.4 TsunamiWL=37RED Mwpd=8.8



Earthquake Location · Td-T50Ex Level · mB · Mwp · T0 · Mwpd Monitor

Earthquake details (automatic solutions):

n	pha	Amin°	rot	origin-time-UTC	lat°	lon°	errH	depth	errZ	T50Ex [n]	Td [n]	TdT50 WL	mB [n]	Mwp [n]	T0 [n]	Mwpd [n]
1	177	3.7	1.9	2011.03.11-05:46:22	38.0	142.4	23	14	15	2.4160	15.131	36.7	7.7166	8.4156	175138	8.8131



Plot: 2011.03.11 06:06:59 UTC
Software: v0.3.1 (2011.03.09)
Agency: INGV