

New here? Scroll down until you see “**the Story**” chapter, and the updates are posted chronological with newest on top.

Discussions and reactions about Nancy’s Exposal:

<https://www.facebook.com/pages/Earth-Changes-Pole-Shift/160997177261147>

(owned by myself)

<http://www.godlikeproductions.com/forum1/message1899799/pg1>

<http://www.godlikeproductions.com/forum1/message1900250/pg1>

<http://earthchanges.ning.com/profiles/blogs/another-one-bites-the-dust>

Want to Contact me? <https://www.facebook.com/PlanetExe>

28 / 06 / 2012 (02:21 UTC+1) - **UPDATE: ”Apples and Tomatoes?”**

Some days passed and the remaining Moderators obviously want to remain in their little world because “finding back to reality” can be deflating sometimes, esp. if you think you’re working on something unique and extremely important.

How could the Moderators ignore that the Dark Twin on Neumayer must be a lenseflare? (and still occuring frequently)

How is it that they ignore that the supposed “PX-Debris” on EIT 171 goes against all logic?

How is it that they ignore Venus traveled as predicted?

How is it that they ignore that Floppy-disks obviously create “PX-ghosts” that anyone can simply confirm?

How is it that they ignore that Maria is obviously not a fake?

How is it that they ignore that Lothar is obviously not a fake either?

How do they ignore supression of critique and any questioning of Nancy’s words?

I can’t tell, but I guess they either didn’t carefully read/reproduced the analysis, or they simply feel more comfortable with Nancy’s phantastic version of Reality. (Unfortunately, the latter seems to apply).

That said, the Moderators show clear indications of being in **deep denial**:

- Nobody of them was able to debunk the contradictions and the only arguments they brought up were emotional in nature.
- They simply ignore the cases and carry on as usual, which prove that they prefer to cling to Nancy’s precast opinions and are not able to figure out for themselves wether her claims are correlating with Facts or not.

Apples and tomatoes?

As you may noticed the Alberto Flare-o-illusion was pushed again and a collection of a single- man’s-images are considered “*undeniable proof of the existence of Planet X*”. Or not?

<http://poleshift.ning.com/profiles/blogs/viewing-the-alberto-s-planet-x-photos-with-aligning-the-sun-s-mid>

Well astrogal50 aka. “PEN #1” aka. the Moderator of the Moderators, believes that hundreds of images of **one and the same person** must prove Planet X is somewhere out there.. (or NOT?)

Comment by [astrogal50](#)

Wow! Paid (professional) and unpaid (amateur) critics of such photos generally claim all captures are lens flares, the pictures are somehow faked,

***and/or there is a world-wide conspiracy to fool the public with such proof.
But this blog shows otherwise.***

It is easy to see why the cover-up artists are so anxious about this revolution of in-the-know common men and women. Just one problem: It is already too late to stop the red filter revolution.

Heh heh! At least she's right about one thing: It is already too late to stop the red filter revolution.

which means, people will hopefully grab a Floppydisk and a camera and will start to play with it for themselves!

Why should "the cover-up artists" be anxious about the public taking a floppydisk in combination with a camera, to see for themselves that the floppy actually creates "flares"?

@"PEN #1", did you ever tried a floppy + cam for yourself? (let me guess.....)

Please **EVERYONE OUT THERE WHO HAS DOUBTS >>**

Grab a floppy, hold it by hand, and film the sun with a camera, as I did:

<http://www.youtube.com/watch?v=IKBFawdIXIo>

Tadaaaaaa,

Anyone can easily produce "PX-Ghost-images" on demand

BTW: Want me to make a collection of images with "PX" just like Alberto did? (Just tell me where you want to have the PX-complex aka. the floppy-flares and Im sure I can arrange the right angle... ;)

BTW #2: Can someone ask Alberto via a private mail to make a video of his "moon-swirls" by holding the floppy by hand? **Lets put his seemingly "genuine" images to a test!**

Or will he avoid it? Will Nancy manage to tell him to never-ever make a video holding the floppy by hand? How will she justify it to Alberto? ..all this remains to be seen and only needs to bother Nancy atm.

Then there was this other argument, brought up by a member:

The comparison of SOHO (Apples) and Alberto's images (Tomatoes), seemingly showing the same, or Not?:

Comment by [Katche](#) yesterday

*OMG! I was thinking exactly about this yesterday and today you bring up this brilliant work! Combined with [Sevan Makaraci's](#) Blog post [SOHO and user captured moonswirl pics saying the same thing, they'r...](#) you have **undeniable** proof.*

Thank You Kojima!

Lets take a view at that posting, <http://poleshift.ning.com/profiles/blogs/soho-and-user-captured-moonswirl-pics-saying-the-same-thing-they->

What is to be seen there?

Well, Alberto's floppy- images are compared with Sattelite images (SOHO LASCO C2/LASCO C3) and the author suggests that they must be showing the same objects.

Since I guess everyone of you is familiar how Alberto's images are made, you may be asking about the other images:

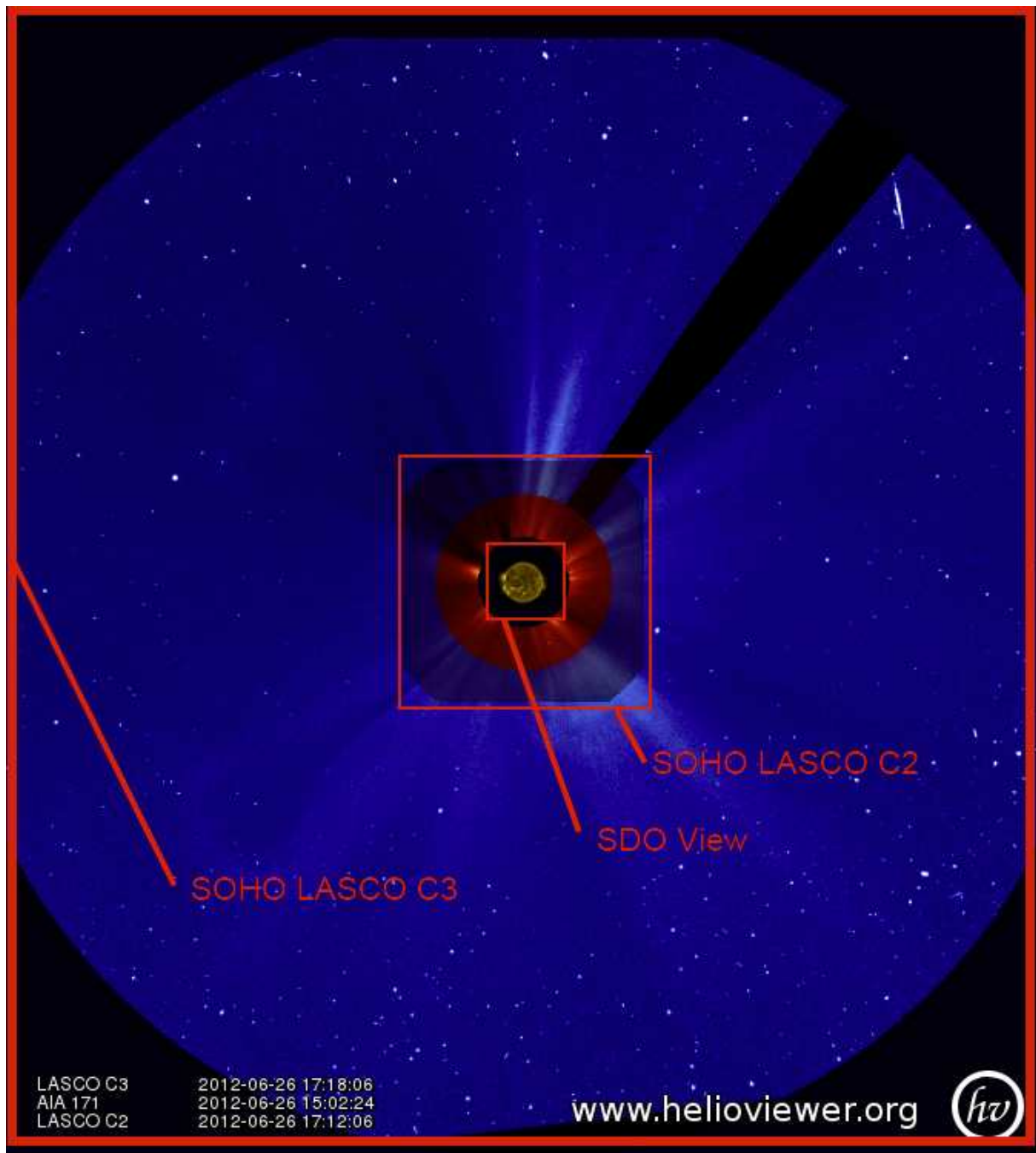
What is SOHO LASCO C2/ C3 actually showing?

Stars, Planets, spacejunk etc. yes, yes... but actually relevant in this matter is the question:

What region of the Sky/Space is SOHO LASCO C2/C3 viewing at?

Well, those of you familiar with satellite-images may noticed that every satellite has its own functions and reasons why they were send up in space.

So lets take a closer look on the Field-of-View for SDO- and SOHO- (LASCO C2,C3)-images:



As you can see,

- The Solar Dynamics Observatory (**SDO**) is giving closeups of the Sun in various filters,
- The Solar and Heliospheric Observatory (**SOHO**) provides **LASCO C2 & LASCO C3**-images showing the regions around the sun.

Does this give an idea what region SOHO is capturing?

Not yet, though we can say,

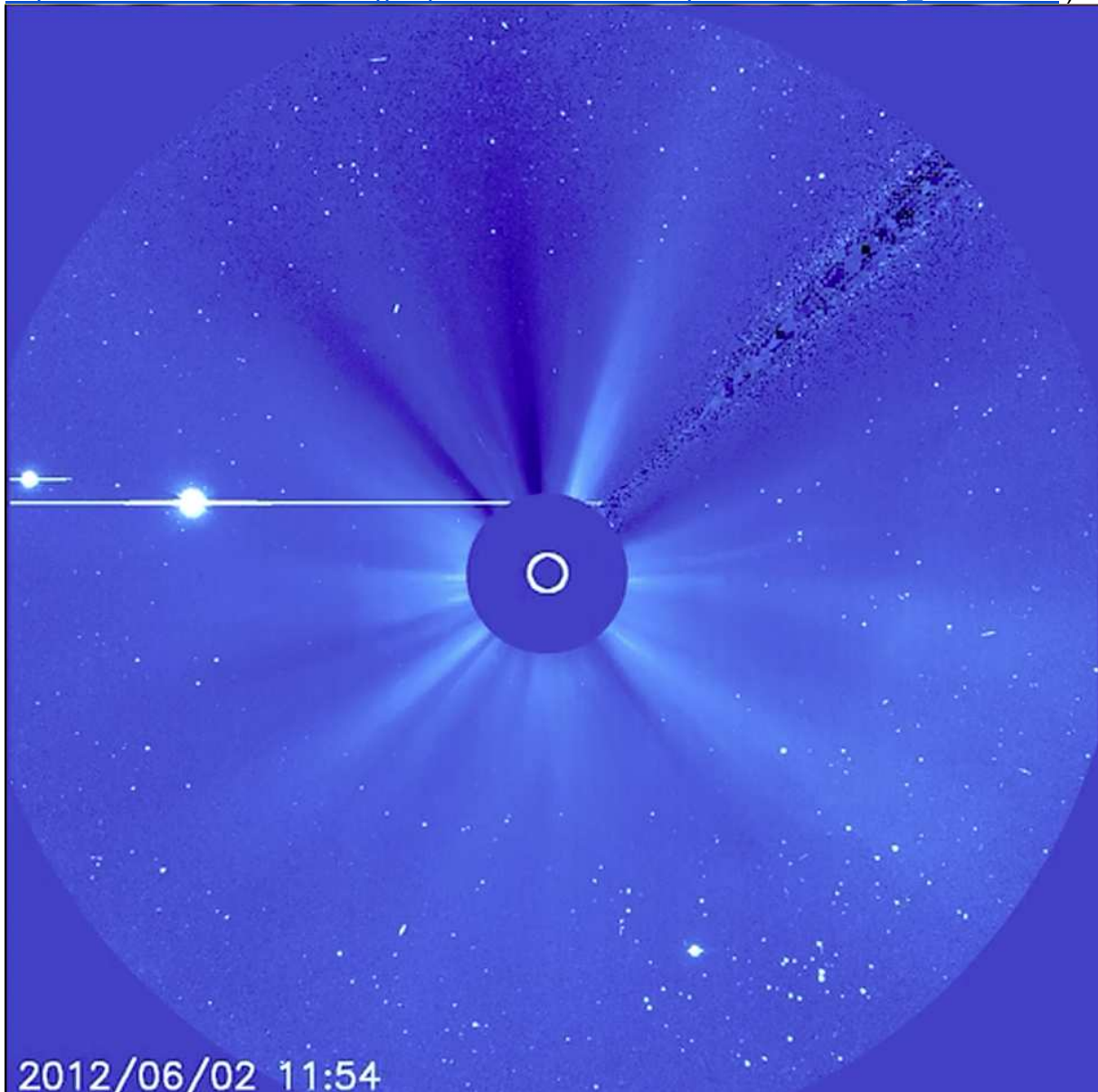
- SDO is capturing a small field of view,
- followed by LASCO C2 showing the immediate region around the sun,

- and finally LASCO C3 showing an even broader area around the sun.

What does this say about the actual field of view when viewn, lets say, from earth?

We can derive the actual field of view by first analyzing the Stars/Planets as I did in the following illustration:

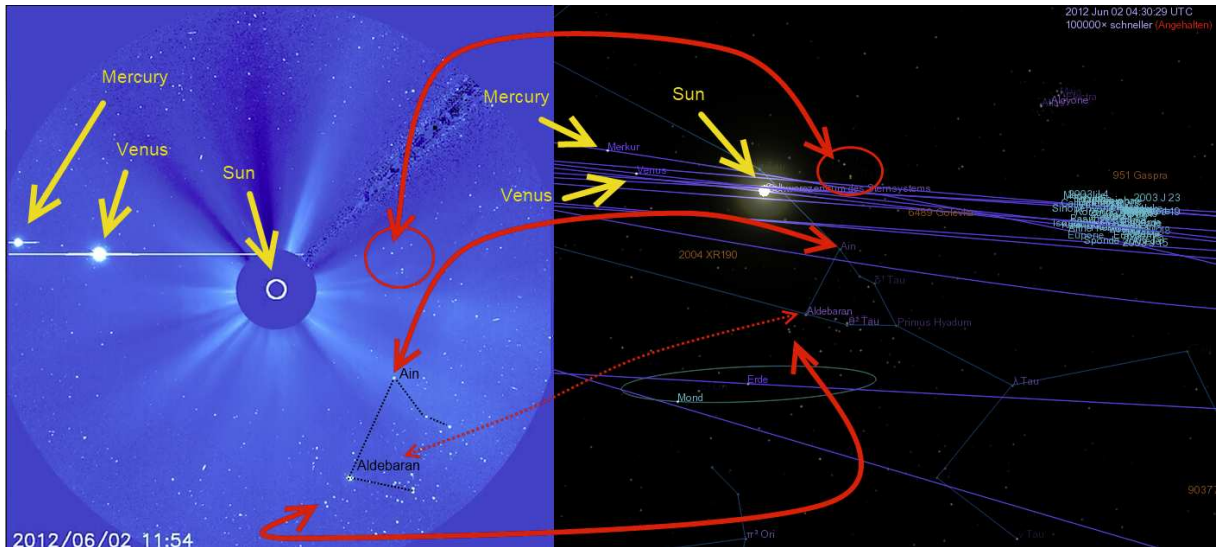
Original random-Image from SOHO LASCO C3 (In this case I took it from http://sohowww.nascom.nasa.gov/pickoftheweek/old/01jun2012/VenusC3_June2.mov)



Now, how can we identify the stars in the background and what are these two dots on the left?

Using Celestia (Freeware) revealed that the two dots on the left are Mercury & Venus, and the star-complex on the lower right were identified to be Aldebaran.

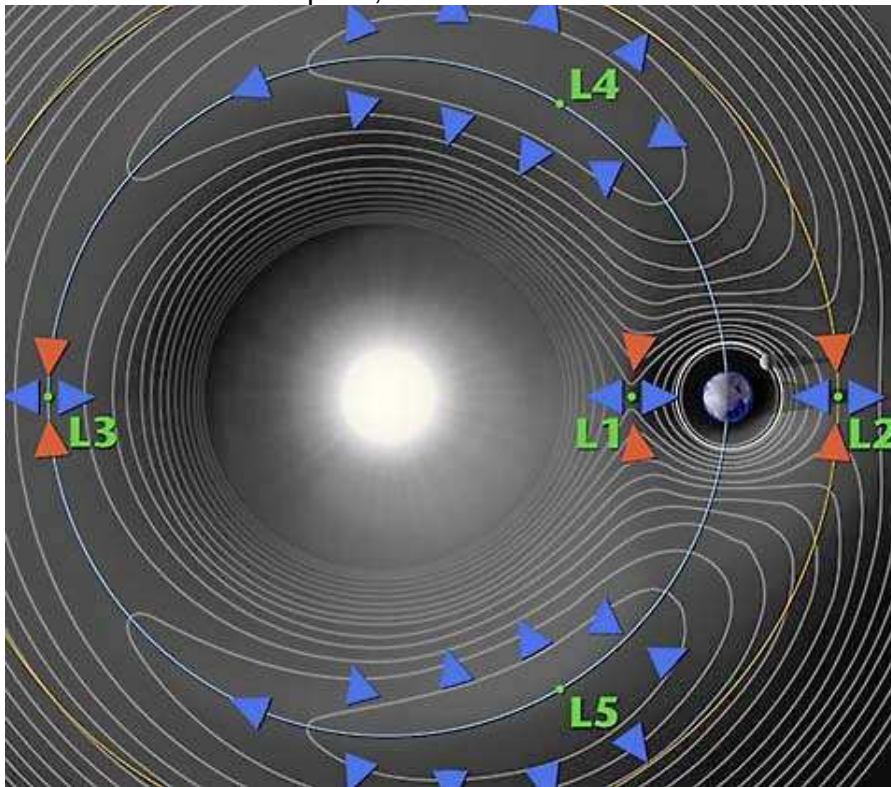
Large Version: http://www.imagebanana.com/view/ufnuh2cm/SOHO_C3View.png



So now we approximately know how “broad” the perspective of LASCO C3 is.

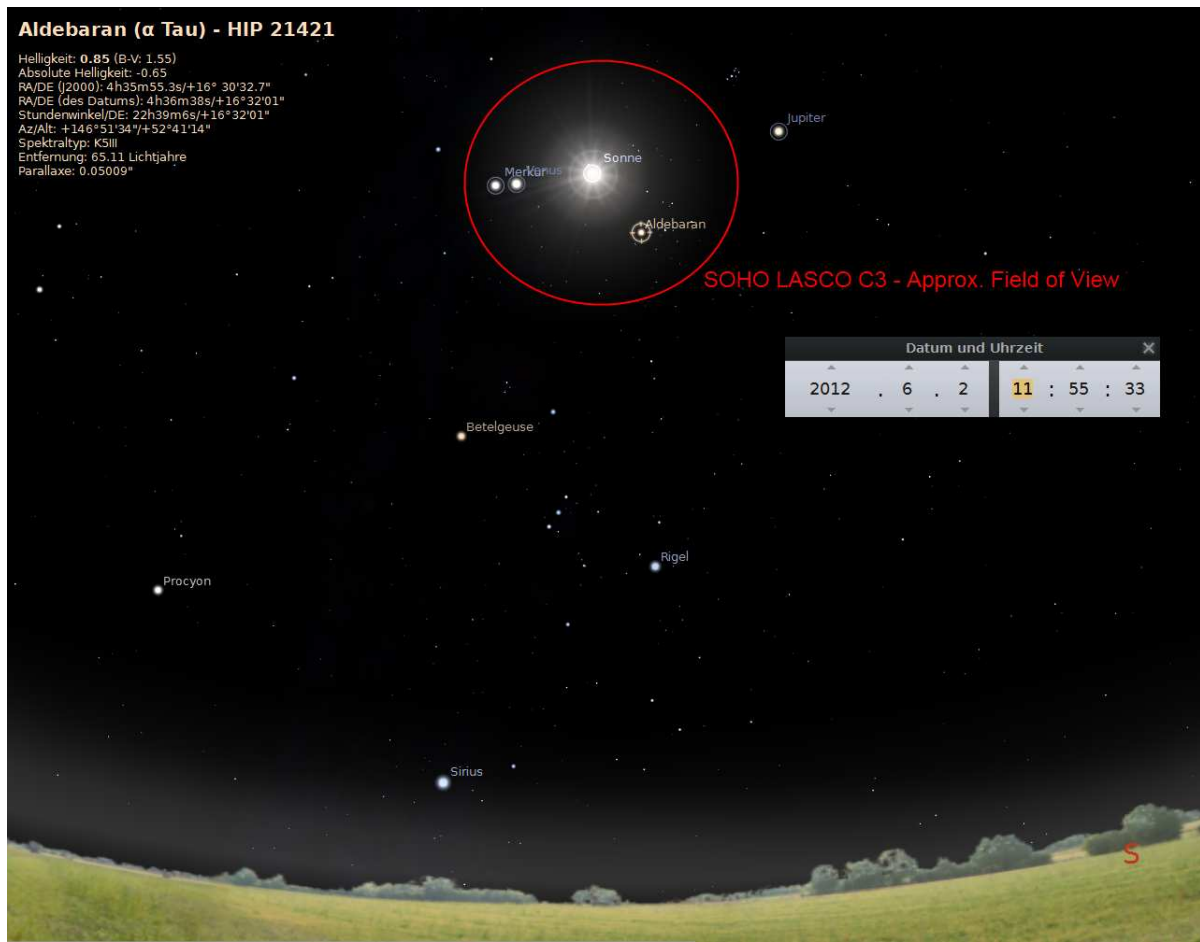
Furthermore, where is SOHO actually riding? And what would it look like from another perspective?

According to http://sohowww.nascom.nasa.gov/classroom/faq.html#SOHO_ORBIT , SOHO rides at the L1 point, which is about three times farther than the Moon:



Projected to a screenshot from Celestia:

Large Version: <http://www.imagebanana.com/view/csfyqt7b/satelliteViewC3.png>



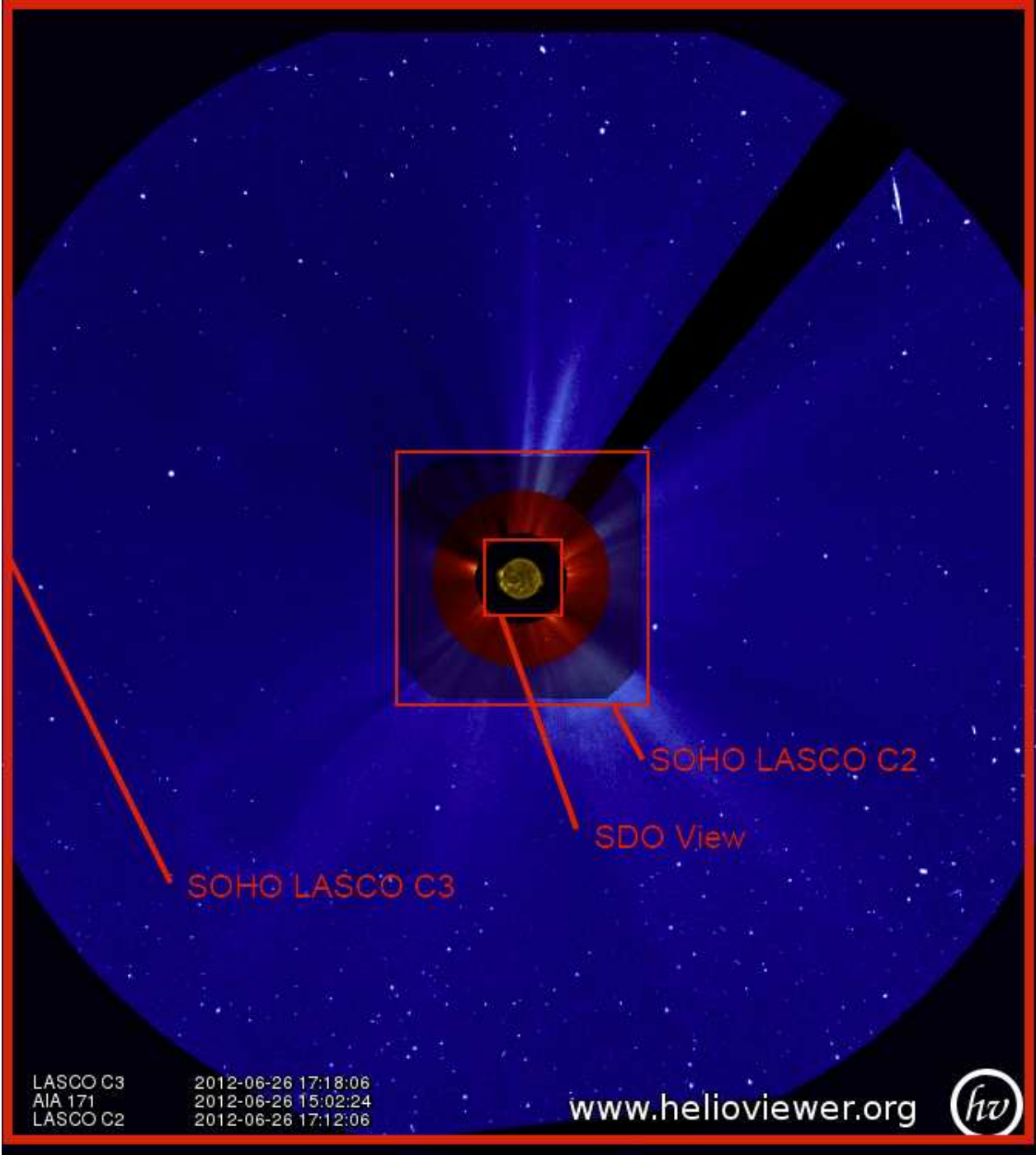
So the red circle you see above, is roughly what SOHO LASCO C3 is capturing, when viewn from earth..

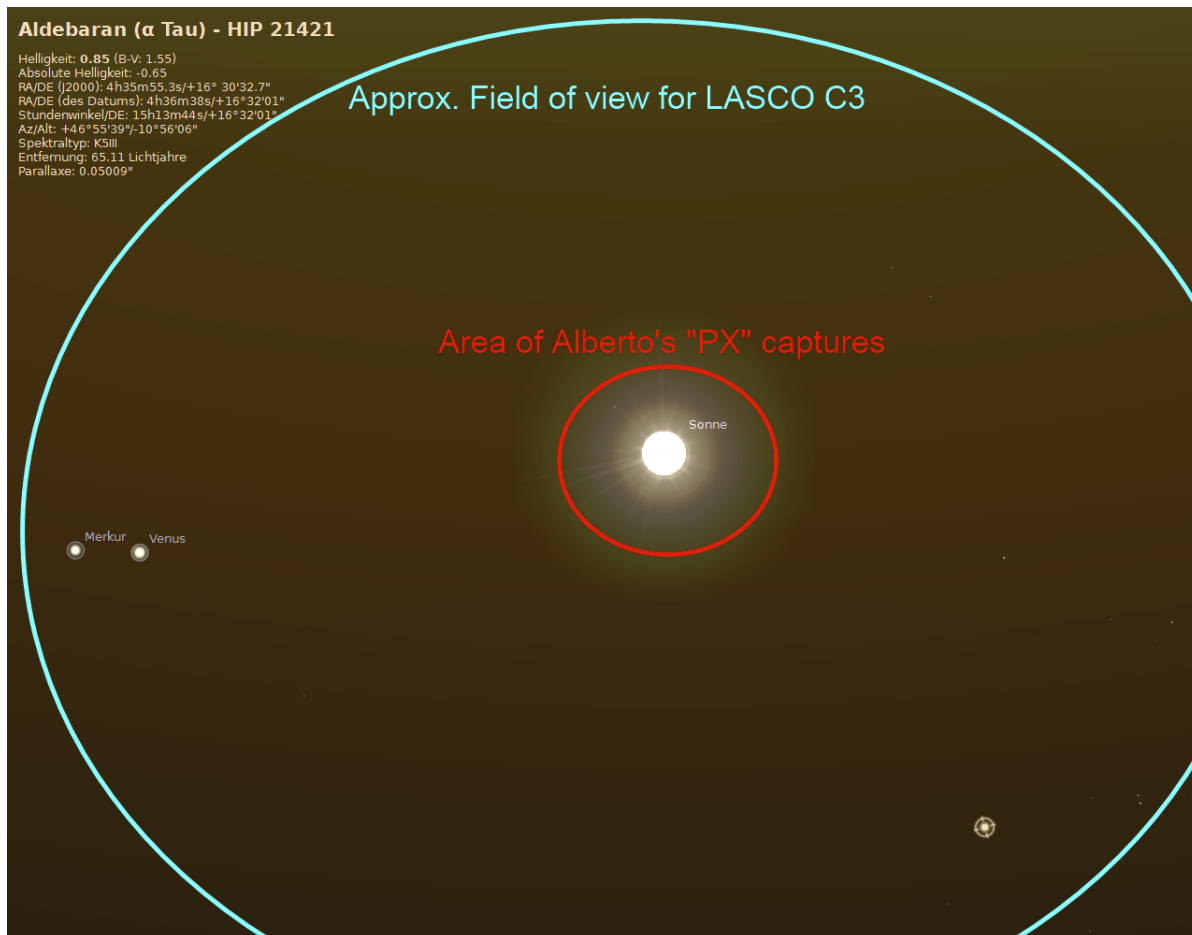
Why is this relevant?

Well, the posting we were talking about (<http://poleshift.ning.com/profiles/blogs/soho-and-user-captured-moonswirl-pics-saying-the-same-thing-they->) compares Alberto's images with Sattelite images, though they are totally different matters:

Images of LASCO C2 (mid view) , and images of LASCO C3 (broad view) are compared with images taken from earth and supposedly showing the same.

A supposed "PX capture" on LASCO C2 **IS NOT THE SAME** as a capture on LASCO C3, despite bringing these in relation with images taken from a camera! These are THREE PAIRS OF SHOES!





See what im trying to say here?

Most members on the PS-Ning do not really have an idea what they're talking about and are mostly speculating on matters, though they appear to "have made their homework".

Let it be said, that I am an amateur in these matters myself and as such I certainly would be way more careful with throwing out conclusions into the public like that.

I hope you don't simply trust what I or anyone on the PS-Ning states, as by doing this, you're giving away your responsibility to someone else.

Note that piling up a lie may seem "substantial" at first glance, but doesn't make it any righter!

(As this is exactly the principle of Nancy's baits.)

Afterall it is a big lesson for us to think more independently, such as avoiding jumping on conclusions, or giving away our responsibility to think for ourselves.

P.S: Did you noticed that the Moderators pushed the Venus-transite BS again?

Gordon G.Gianninoto brought up an article on "UFO-digest" and obviously came across

my comments on the PS-Ning when we were originally believing the SWAP images were showing a “venus wobble” since he used my gif-animation as “proof”

Check my original comments: <http://poleshift.ning.com/profiles/blogs/venus-transit-june-5th-6th-surprise-resulted>

Quoted from Gordon’s article: <http://www.ufodigest.com/article/venus-bunny-hops-across-face-sun-slow-motion-sine-wave-unlike-predicted-course>

“Second, and more importantly, VENUS BUNNY HOPPED ACROSS THE SUN IN THE TRANSIT. This is totally INEXPLICABLE by conventional calculations and knowledge UNLESS THE PRESENCE OF PLANET X IN BETWEEN THE EARTH AND THE SUN IS FACTORED INTO THE EQUATION. Think I am kidding? I am not. Look at these links, a gif and a youtube video, and see for yourself:

http://api.ning.com/files/ZHxqo1yPr0JICEbA9gK4*RLGiEyCU-YQPyCJiPiEPjErihEC7301mO*fUHTEEN7dJhAW1cd8tNg60h33YBy1XENiDoFDMbn/SWAP_VenusWobble.gif
(^ my gif-animation)

http://www.youtube.com/watch?v=vHwiSv-LjaQ&feature=player_embedded”

BUT,

He better should have read my other comment aswell! Or the comments below his own article, since its logically related to Proba2’s orbit as I explained in Case 3 in the Story-chapter below (in case you have missed it).

Seems someone was too quick with conclusions again, and now will find egg on his face when confronted with facts.

BTW: I made a rough approximation (accurate up to +/-15minutes) of the predicted path of Venus, compared to the actual path for those who still have doubts:

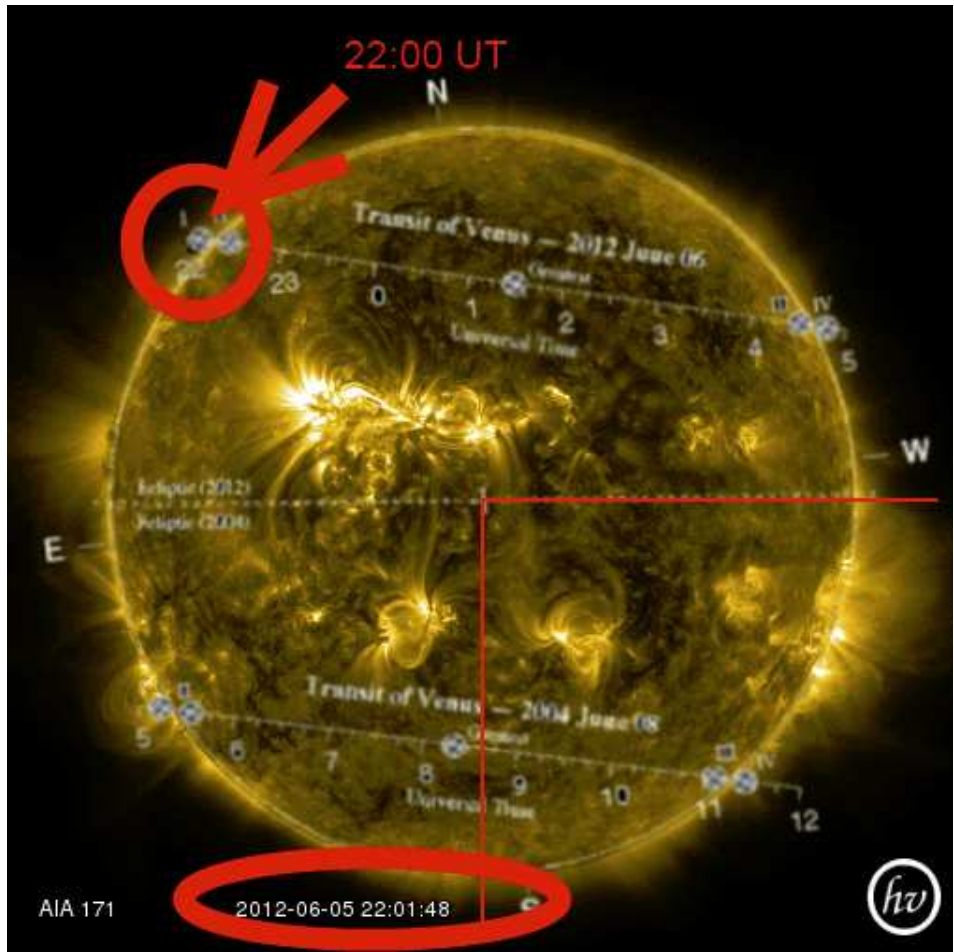
Note that the Sun is *slightly* displaced upwards in the last couple of images which respectively places Venus a little above the predicted path. (If the position of the last images is corrected, Venus will remain centered to the path.)

OPEN GIF ANIMATION HERE:

http://www.imagebanana.com/view/ljzw5mjh/aia_venus_Comp2.gif

I used helioviewer.org for the Source images, and this sheet for the predicted path:

<http://www.nasa.gov/centers/goddard/news/releases/2012/12-38.html>



Cheers!